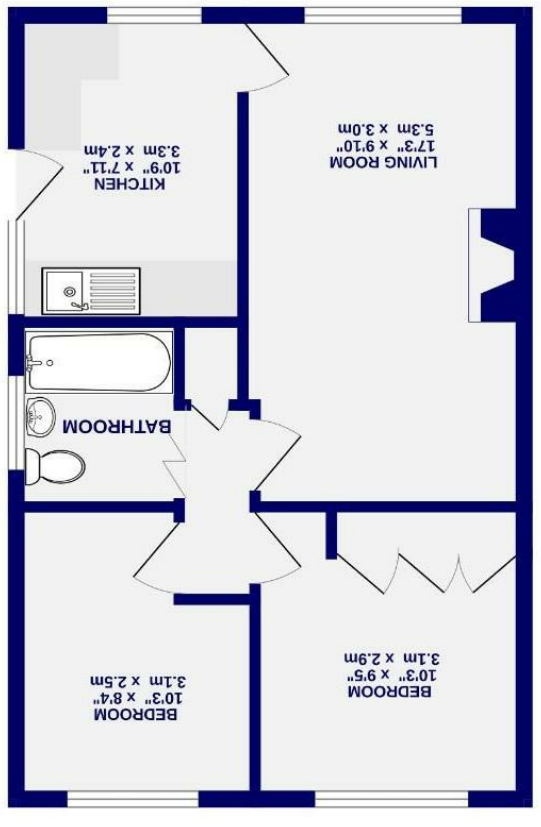


These particulars have been prepared as accurately and as reliably as possible, but should not be relied upon as 'statement of fact'. If there is any point which is of particular importance to you, please contact the office and we would be pleased to check the information. We have not tested any services, appliances, equipment or facilities and nothing in these particulars should be deemed to be a statement that they are in good working order, or that the property is in good structural condition or otherwise. Any statements, measurements, floor plans or distances referred to are given as a guide only and are not precise. Purchasers must satisfy themselves by inspection or by otherwise regarding the items mentioned above and as to the correctness of each of the areas, measurements, floor plans or distances referred to in these particulars. No person in the employment of Ashtons has any authority to make or give any representation or warranty whatsoever in relation to this property or these particulars nor enter into any contract relating to the property on behalf of the vendor.

- Semi Detached Bungalow
- Two Bedrooms
- Corner Plot
- Low Maintenance Garden To Three Sides
- Garage
- Ample On Street Parking
- No Onward Chain
- EPC E

Freehold
Council Tax Band - B

Silverdale Court Woodthorpe, York YO24 2SL



When every attempt has been made to ensure the accuracy of the location, measurements of rooms and floor areas and the description of the property in the particulars, the agent shall not be responsible for any error or omission. The agent shall not be responsible for any error or omission in the particulars, the agent shall not be responsible for any error or omission in the particulars, the agent shall not be responsible for any error or omission in the particulars.

GROUND FLOOR
482 sq.ft. (44.7 sq.m.) approx.



Silverdale Court
Woodthorpe, York
YO24 2SL

£200,000



A two bedroom bungalow occupying a generous corner plot within a quiet cul de sac location. Offered with no onward chain, the property presents an excellent opportunity for purchasers looking to modernise and add value.

The accommodation opens with a front facing kitchen, while the main living space is a lounge dining room featuring a large front window and a central feature fireplace, creating a bright and welcoming room. A three piece family bathroom sits off the hallway and is in need of updating. To the rear of the bungalow are two bedrooms, with the main bedroom benefiting from fitted wardrobes.

Externally, the property enjoys a particularly spacious corner plot with gardens to the front, side and rear. The gardens are complemented by two wooden sheds and a greenhouse, providing ample storage and gardening space.

Separately, there is a garage en bloc located at the entrance to the cul de sac.

Well positioned and offering clear potential, this bungalow will appeal to those seeking a manageable home with scope to improve in a popular residential area of York.

Council Tax Band B

